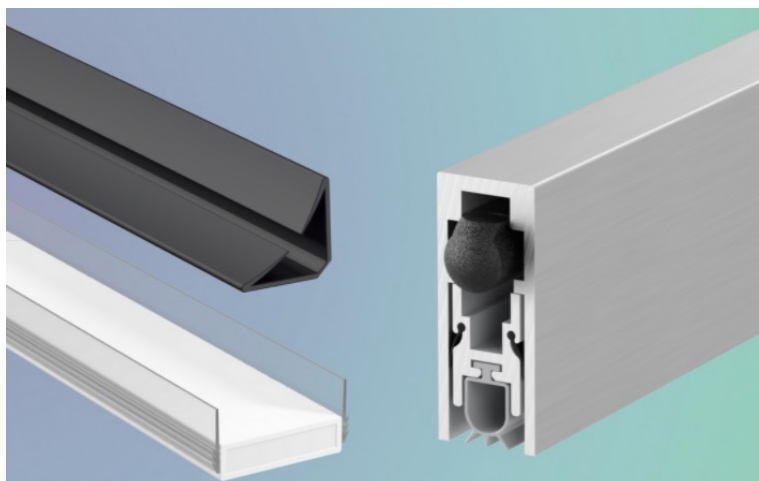




IFSA INFORMATION SHEET 05:
GUIDE TO THE SELECTION OF
SMOKE SEALS FOR DOOR ASSEMBLIES



**IFSA INFORMATION SHEET 05:
GUIDE TO THE SELECTION OF SMOKE SEALS
FOR DOOR ASSEMBLIES**

CONTENTS

1. INTRODUCTION.....	3
2. PURPOSE OF SMOKE SEALS	3
3. INSTALLATION OF SMOKE SEALING SYSTEMS.....	4
4. GENERAL GUIDANCE.....	4
5. DURABILITY	5
6. SPECIFIC GUIDANCE ON GENERIC TYPES OF SMOKE SEALS	5
7. SEALS FOR FITTING TO HEAD AND JAMBS OF DOOR ASSEMBLIES	6
8. SEALS FOR USE AT MEETING STILES.....	11
9. SEALS FOR USE AT THRESHOLDS	12
10. CONCLUSIONS.....	13
11. FURTHER READING.....	13
12. INFORMATION ABOUT IFSA	14

IFSA INFORMATION SHEET 05: GUIDE TO THE SELECTION OF SMOKE SEALS FOR DOOR ASSEMBLIES

1. INTRODUCTION

IFSA Information Sheet No. 3 'Guide to the Use of Smoke Seals in Door Assemblies' was the first data sheet to explain the technology behind the use of smoke seals on fire resisting door assemblies. Whilst it presented a list of factors to take into account when specifying seals, it did not make recommendations as to which type of seal, e.g. compression or wiping, blade or brush, was most suited to the application under consideration.

The intumescent sealing industry has developed a wide variety of door assembly smoke seals over the years, in response to the demand from both the construction industry and building users for products which will perform in different situations. This information sheet lists the merits and application suitability of the main generic types currently available. This Information Sheet has been prepared in order to assist with the selection of smoke seals for the purpose of improving the leakage rate of existing doors to satisfy the regulatory recommended rate of 3m³/m/hr @ 25Pa when tested in accordance with BS476: Part 31: Section 31.1.

Whilst some of the guidance given in respect of Type A seals (referred to later in this guidance sheet) may be applicable to combined smoke and intumescent seals, it is primarily aimed at separate stand-alone smoke seals. When selecting combined intumescent and smoke seals then the manufacturers' recommendations in respect of fitting, including the total length of permitted interruptions, shall be followed explicitly. As it is not possible to illustrate all the variations of generic types of seal, IFSA Members should be consulted for advice on the most suitable seal to suit specific circumstances.

The principals of smoke seal selection discussed herein are applicable to seals fitted to doorsets that have been tested to the ambient temperature criteria of BS EN 1634-3 standard but this document is primarily concerned with seals tested to the BS476: Part 31: Section 31.1 standard.

2. PURPOSE OF SMOKE SEALS

Smoke poses a greater threat to life safety than fire itself and it is for this reason that smoke seals are recommended for the protection of escape routes in the various guidance documents which support UK building regulations for new buildings and those undergoing significant alterations (i.e. Part B (Fire Safety) of Schedule 1 to the Building Regulations 2010).

For example, a study of the various guidance documents such as Approved Document B and BS9999: 2017 reveals that the majority of the fire resisting doors within a building are also required to have a smoke control function, against predetermined performance requirements, which has to be verified by test. An analysis of the use and distribution of smoke control doors shows that they are recommended for the protection of routes required for providing means of escape in the event of a fire.

Currently, for practical reasons, only seals that restrict the spread of cold smoke are specified. The purpose of smoke seals is to limit, but not totally eliminate, the movement of cold smoke from one compartment or space to another. Cold smoke seals are not generally able to prevent the passage of higher temperature smoke which may cause some cold smoke seals to melt. However, at higher temperatures the intumescent seals activate to limit, but not eliminate the movement of hot smoke.

The more recent BS EN 1634-3 test standard for smoke leakage does provide a method for establishing smoke control at elevated temperatures (200°C). Doorsets that have been successfully tested to this standard can be classified as S₂₀₀. Smoke at elevated temperatures is a requirement in some EU countries but is not generally specified in the UK. For the purpose of this guidance sheet only smoke seals that limit smoke leakage at ambient temperatures is discussed.

A fire only sealing system usually consists of an outer casing (e.g. PVC or aluminium) used to protect the intumescent core, and is typically provided with a high performance self-adhesive system for installation within a rebate either in the door leaf and or door framing section. A typical combined fire and smoke sealing system may include a brush and/or a series of integral fins, which are essentially thermo-fused on the rigid casing or positioned within a retaining groove with the fire seal component.

IFSA INFORMATION SHEET 05: GUIDE TO THE SELECTION OF SMOKE SEALS FOR DOOR ASSEMBLIES

3. INSTALLATION OF SMOKE SEALING SYSTEMS

The recommended acceptable smoke leakage performance of a smoke control door assembly is given in Approved Document B to the England & Wales Building Regulations and also in the relevant parts of BS9999: 2017. There are differences between the recommendations but both are deemed to be satisfactory to demonstrate compliance with the regulations.

While each recommendation requires the testing of a door assembly in accordance with BS476: Part 31: Section 31.1, there is a divergence in requirements at the threshold. Approved Document B, for example, allows performance to be evaluated without any reference to smoke transfer which may result from the threshold gap.

BS9999 calls for the threshold performance to be separately considered and provides three options with varying degrees of effectiveness. More recent research by IFSA Members shows that it is vitally important to incorporate a smoke seal of known performance at the threshold and failure to do so can completely negate the beneficial contribution of seals around the rest of the door assembly.

Examples of appropriate perimeter and threshold sealing systems are illustrated and reviewed on the later pages of this Information Sheet. In practice, the fitting of a stop has little effect on the performance of a seal because the door normally does not make contact over the whole of the stop surface. The test method does not specify whether the stop is a good fit or not and the test results may be better than achieved in practice because of a particularly well fitting stop. Manufacturers' advice should always be taken on the installation and compatibility of sealing systems.

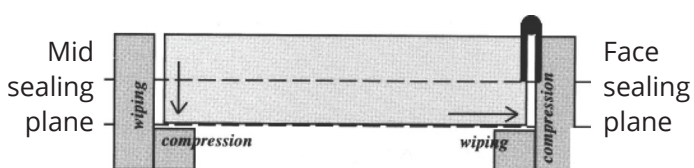


Figure 1: Movement of door relative to frame during final action of closing.

4. GENERAL GUIDANCE

There is no perfect seal which accommodates all the requirements. All seals have some good features and some disadvantages which make them more suited to some applications and less to others. The following general issues are important when choosing the most suitable product for specific applications:

4.1 Smoke leakage performance

The supplier of the smoke seal should provide test evidence in accordance with BS476: Part 31: Section 31.1 to demonstrate that the seal has been incorporated in a test on a fire door assembly where the leaf has similar physical characteristics, e.g. thickness, weight, construction and stiffness as the leaf in the assembly to which it is to be fitted. It is important to check that the smoke seal was tested on an assembly of the same configuration as the intended use and, in particular, that the perimeter gaps were representative. Conventional seals should be fitted in a plane either contacting the outer face of the door or parallel to this plane within the thickness of the door because gaps at the corners allow significant leakage.

As a door leaf makes contact with the seals, the mode of operation depends on the position of the seal in the frame or door edge. Figure 1 shows that when the seals are fitted in one plane, for the reasons just explained, the deformation is different at the closing jamb from that at the hanging jamb. Seals which are particularly good in a wiping mode may not be so good in a compression mode and vice versa. Various types of seal have been developed in an effort to cope with these differing requirements and provide effective sealing.

IFSA INFORMATION SHEET 05: GUIDE TO THE SELECTION OF SMOKE SEALS FOR DOOR ASSEMBLIES

5. DURABILITY

It is important that smoke control doors that are in constant use are fitted with seals that are able to withstand the daily cycling for a reasonable period without damage. Cyclic endurance testing does not form part of the BS476: Part 31: Section 31.1 test procedure, but is included in the performance assessment criteria required by some Third Party Certification schemes, whereby the seal is subjected to 100,000 open/shut cycles and the seals have to maintain the required leakage rate specified in BS476: 31.1 (3m³/m/hour at 25Pa), both before and after the cyclic testing.

5.1 Ability to accommodate variable gaps between the door edge and frame and distortion of the door leaf

This is most important in retrofit situations when buildings are being upgraded as existing doors tend to be less well fitting. The gaps can vary significantly around the door edge and the door may be, to some degree, warped. Some seals are able to accommodate variations in fit more than others and this is noted in the recommendations that follow. These problems are more easily controlled when supplying new door assemblies which are factory assembled. Even new doors can shrink after installation, however, due to loss of moisture and, hence, the door leaf to frame gap can increase, with consequent effects on the seal fit.

5.2 Effects of the door's ability to self close

Where the building design prevents the movement of air, for example, due to sealed windows or small unventilated lobbies, then smoke seals can make it more difficult to open and close a door. Similarly, seals offer varying degrees of friction or closing resistance. Both of these issues are taken into account in the specification recommendation given in Information Sheet No. 3. Certain generic types of seal do have a greater effect on closing than others and this is highlighted in the recommendations.

Guidelines on the opening forces for access are given in Approved Document M and BS8300: 2009 + A1: 2010, which are also incorporated within the requirements of some Third Party Certification schemes for fire and smoke seals.

5.3 Interruption by items of hardware

Care must be taken to ensure that selected smoke seals can achieve the performance criteria recommended in codes and guides to regulations, of 3m³/m/hr maximum smoke leakage. Interruptions by hinges and other hardware can significantly affect the performance of a seal. Those seals which can meet the requirements, even with multiple interruptions, will tend to make the door assembly harder to operate in everyday service because it is more important to ensure maximum compression or deflection of the seal in this case. Some generic types of seal do not require interruptions which generally make it easier for these to meet the recommended leakage rate. This is taken into account in the following comments.

6. SPECIFIC GUIDANCE ON GENERIC TYPES OF SMOKE SEALS

The guidance given on the following pages is only intended to be general in its nature because variations exist between products of the same generic type. Information on smoke leakage performance is not given and, therefore, evidence of performance needs to be obtained from the supplier before specifying the selected type.

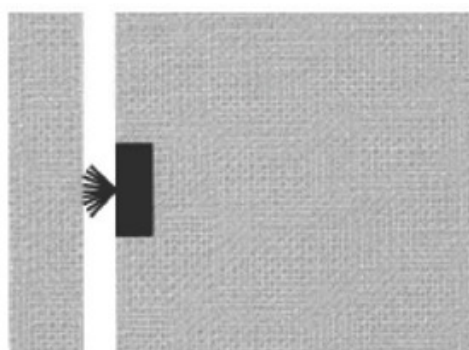
An additional consideration, particularly when retrofitting smoke seals, is that certain designs of smoke seal may be able to tolerate leaf twist and/or large perimeter gaps at the leaf edge and maintain the required leakage rate, but if the door is also fire resisting, the gaps and/or leaf twist may well be outside of acceptable tolerances from a fire resistance perspective and the door assembly may need to be considered for replacement. If there is any doubt as to the suitability of an existing door for smoke or fire resistance performance, specialist advice should be sought, prior to undertaking retrofit work.

IFSA INFORMATION SHEET 05: GUIDE TO THE SELECTION OF SMOKE SEALS FOR DOOR ASSEMBLIES

7. SEALS FOR FITTING TO HEAD AND JAMBS OF DOOR ASSEMBLIES

7.1 TYPE A: DOOR EDGE/FRAME REVEAL FITTED SEALS

These seals operate in a wiping mode which means that there is a significant resistance to opening and closing unless the door to frame gap is accurately controlled and does not vary significantly around the perimeter of the door. Very tight gaps may cause damage to the seal and hinder closing. If the seals are part of a combined intumescent fire and smoke seal they are likely to be interrupted by hardware and are not likely to meet the current maximum leakage rate of $3\text{m}^3/\text{m}/\text{hr}$ @ 25 Pa unless there is test evidence in accordance with BS476-31.1 which shows compliance. If the smoke seal is not combined with an intumescent seal, it can be set away from the leaf centre line thereby avoiding hardware.



Type A1: Pile (or brush) seal

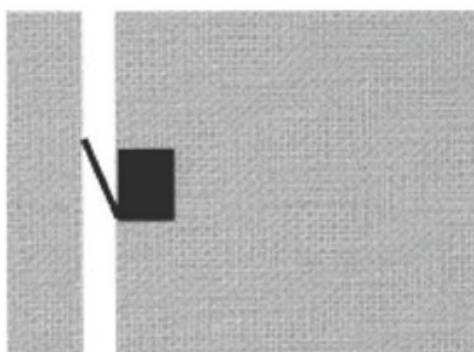
Fitting into a groove in the door edge or frame gives positive fixing.

Tight gaps can cause accelerated wear and hamper closing.

Pile can become compressed or distorted after prolonged use.

Self-closing action of the door leaf may be hampered due to friction.

Some pile/brush seals incorporate smoke fins to achieve the current maximum leakage rate of $3\text{m}^3/\text{m}/\text{hr}$ @25Pa which can lead to a 'wisping' noise when the door is open/shut and can also add to the closing force.



Type A2: Angled neoprene blade

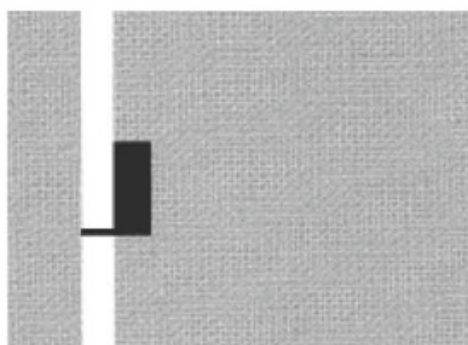
Closing force is low for correct gap width.

Good resilience and recovery.

Very tight gaps can cause this type of seal to tear especially if edge of frame is very square and the blade is thin.

Can have high resistance to opening if gap is too wide because seal may be forced to flip over before leaf can be opened.

IFSA INFORMATION SHEET 05: GUIDE TO THE SELECTION OF SMOKE SEALS FOR DOOR ASSEMBLIES

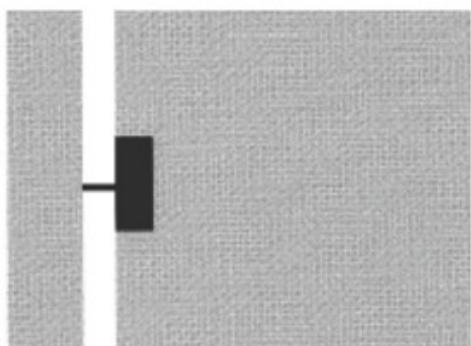


Type A3: Offset straight elastomeric blade

Offset blade makes it possible to bypass slim hinges or bolts and maintain smoke sealing.

Thin, short flexible blade has less tolerance of gap width than the angled elastomeric blade but it is less affected by flip-flop effect during opening. It is more tolerant of gap width than pile seals.

Short blade makes it less tolerant to increases in door gap width.



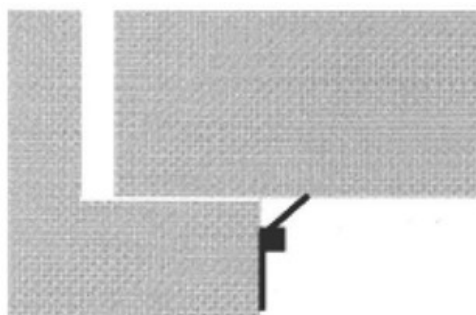
Type A4: Straight elastomeric blade

This type is available in single blade or twin versions.

Double blades may improve the resistance to smoke leakage but may also introduce more friction and make self-closing harder.

7.2 TYPE B: STOP MOUNTED SEALS FITTED TO OUTER VISIBLE FACE

Ideal for fitting on existing doors because the door does not have to be removed but the product is normally visible. Can tolerate larger variations in gap width because of its surface position. Gaps between the door face and the stop can be accommodated during fitting. More prone to damage by trolleys or other traffic. Not very invasive when used on historical doors, but is normally conspicuous. The smoke seal is less prone to causing problems associated with self-closing of the door leaf. This type of smoke seal is rarely interrupted by items of hardware.

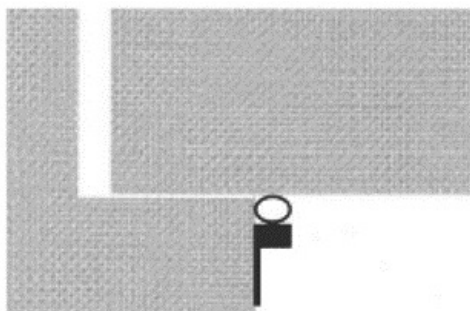


Type B1: Angled neoprene blade

The smoke seal, if well designed, has the lowest resistance to closing and is exposed to less frictional wear from the action of the door closing, making it more durable.

Some smoke seals have the facility for adjusting the blade position to accommodate movement of the door leaf after the seals have been fitted. The seal can accommodate reasonable "in-service" distortion of the leaf and is generally better than pure compression seals in this position.

IFSA INFORMATION SHEET 05: GUIDE TO THE SELECTION OF SMOKE SEALS FOR DOOR ASSEMBLIES



Type B2: Compressible Resilient Bulb

The smoke seal is exposed to less wear from the action of the door closing on the leading edge and is therefore more durable.

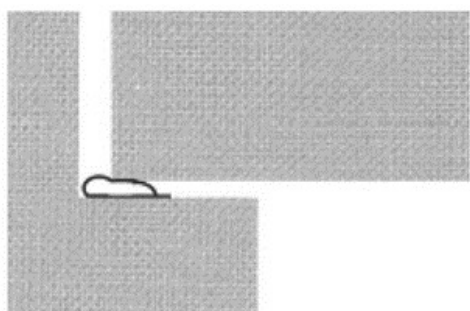
When fitted to the closing stile, the seal is exposed to less wear than a wiping seal but it can suffer shear failure when fitted to the heel of the door (hinge edge).

This type is more prone to causing problems associated with self-closing of the door leaf than the stop mounted blade seal because of the higher compression forces. Thin walled compression seals are more easily compressed and less likely to produce closing problems but are more likely to suffer from tearing or fatigue.

Only limited ability to accept “in-service” distortion of the leaf depending upon the acceptable levels of compression.

7.3 TYPE C: STOP MOUNTED SEALS FITTED TO INNER NON-VISIBLE FACE

The seal is not conspicuous and is suitable for historic or aesthetically sensitive doors. Can accommodate larger door edge to frame gaps but has limited ability to cope with door distortion. If the door is an existing good fit on the stops it will have to be re-hung or the stops refitted if planted. This type of seal is normally uninterrupted by items of hardware.

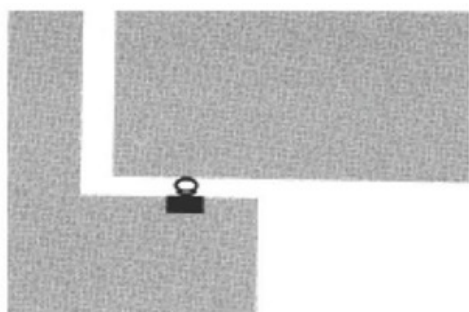


Type C1: Surface mounted resilient bubble

The durability of the seal is dependent on the performance of the bond between the seal and the frame, which in turn is influenced by the preparation of the surfaces.

Depending upon the resistance to compression this seal is prone to causing some problems associated with self-closing.

IFSA INFORMATION SHEET 05: GUIDE TO THE SELECTION OF SMOKE SEALS FOR DOOR ASSEMBLIES



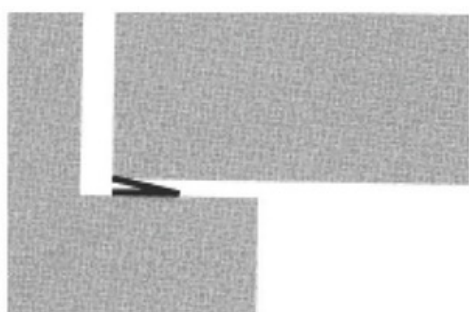
Type C2: Resilient bulb in recessed holder

The positive nature of the fixing into the doorstop means that the seal is less likely to become detached than Type C1.

This seal is invasive and less suitable for historic doors.

Although the smoke seal can accommodate fairly large variations in door edge gap, the gap between the doorstop and the door leaf face is critical. The seal cannot accommodate warped door leaves unless the doorstop is adjusted or the balloon is very thin walled and easily compressed.

Prone to shear failure caused by the heel of the door closing into the stop.



Type C3: Surface mounted resilient blade

The smoke seal is able to accommodate a wide variation in door edge gap sizes although an even gap between the door face and the doorstop is required. In retrofit situations this may often require adjustment of the hinges to improve the hanging.

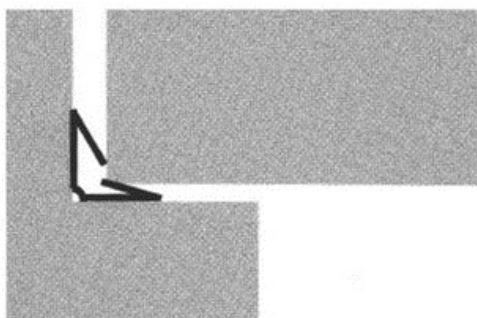
The smoke seal has limited ability to accommodate door leaf distortion.

This seal is less prone than other Type C seals to causing problems associated with self-closing of the door leaf.

IFSA INFORMATION SHEET 05: GUIDE TO THE SELECTION OF SMOKE SEALS FOR DOOR ASSEMBLIES

7.4 TYPE D: CORNER REVEAL MOUNTED SEALS FITTED TO INNER FACE

The durability of this seal type is dependent on the quality and performance of the bond between the seal and the frame. This can be influenced by preparation of the surfaces. Non-invasive and suitable for historic doors. Rarely interrupted by items of hardware. May not be possible to fit to a door with a tight door edge to frame gap without refitting door.



Type D1: Surface mounted dual resilient blades

The low resistance to deflection causes few frictional problems in respect of self-closing.

May be difficult to fit if the corner is badly defined unless the seal is specifically designed to minimise this problem.

The smoke seal has limited ability to accommodate door leaf distortion.

In retrofit situations, may require adjustment of hinges or repositioning of the door stop to provide sufficient clearance for fit.



Type D2: Surface mounted resilient blade

Easy to fit into poorly defined corners.

The low resistance to deflection causes few frictional problems in respect of self-closing.

The smoke seal has limited ability to accommodate door leaf distortion.

In retrofit situations, may require adjustment of hinges or repositioning of the door stop to provide sufficient clearance for fit.



Type D3: Surface mounted resilient bubble

Easier than type D1 to fit into poorly defined corners.

The slight wiping nature of this seal is prone to slightly increase the problems associated with resistance to self-closing.

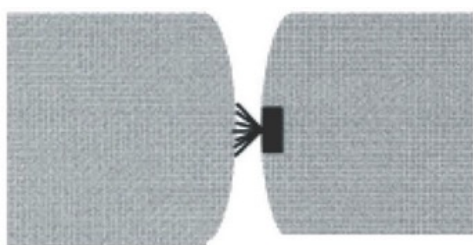
The smoke seal has limited ability to accommodate door leaf distortion.

In retrofit situations, may require adjustment of hinges or repositioning of the door stop to provide sufficient clearance for fit.

IFSA INFORMATION SHEET 05: GUIDE TO THE SELECTION OF SMOKE SEALS FOR DOOR ASSEMBLIES

8. SEALS FOR USE AT MEETING STILES

The seal fitted to the meeting stiles of a pair of doors has to be Type A (i.e. wiping) and, therefore, the other seals fitted to the head and the hanging or pivoting stiles have to be of the same type, unless test evidence in accordance with BS476-31.1 is available to prove the mixed seal types. Pairs of doors are difficult to seal satisfactorily, so it is essential to consult manufacturer's literature to ensure good performance. In particular, the seals are not very tolerant of variations in door edge to frame gaps. Where locks or flush bolts are fitted, the seal is likely to be interrupted making it difficult to achieve the required performance. It is not usually possible to mix stop mounted seals with wiping seals on these types of doors. Many pairs of doors have curved door edges to allow easy opening and special seals with curved faces have been developed for these applications. Note that blades or brushes should never be put into both edges simultaneously. The smoke seal may face an intumescent seal in the opposite door edge, dependent upon manufacturer's instructions.

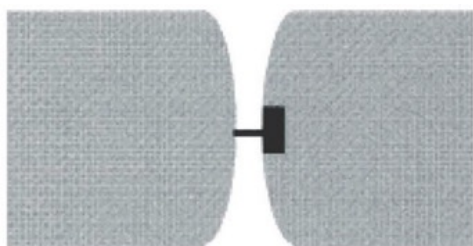


Type M1: Pile (or brush) seal

Tight gaps can cause accelerated wear and hamper closing and pile can become compressed or distorted after prolonged use.

Self-closing action of the door leaf may be hampered due to friction.

It is recommended that a smoke fin is incorporated within the pile to meet the current maximum leakage rate of 3m³/m/hr @25Pa.



Type M2: Straight elastomeric blade

If the blade is too thick both closing and opening will be hampered.

If blade is too thin it may tear in normal operation.

Good recovery from deformed state.

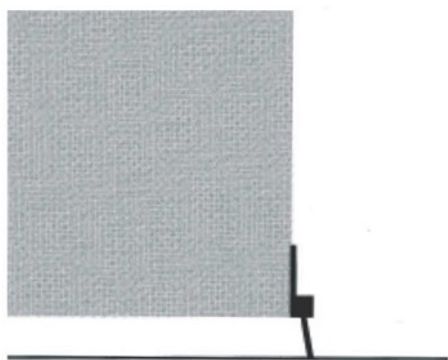
Notes:

1. For door assemblies with rebated meeting edges, typically it will only be necessary to fit a smoke seal in the bottom of one of the meeting edge rebates. Advice should be sought from the seal manufacturer to ensure the seal is suitable for rebated meeting edge applications.
2. There are many situations where single acting pairs can be effectively sealed by the use of an astragal incorporating a single or dual flexible blade element. Advice should be sought from the seal manufacturer to ensure the seal is suitable for unrebated meeting edge applications with astragals.

IFSA INFORMATION SHEET 05: GUIDE TO THE SELECTION OF SMOKE SEALS FOR DOOR ASSEMBLIES

9. SEALS FOR USE AT THRESHOLDS

To be truly effective the line of the seal should line up with the seals fitted to door head and stiles. To achieve good performance, it is necessary to pay attention to the joint between the stile seal and the threshold seal.



Type T1: Fixed seal on level floor

There can be a significant friction effect as the seal remains in contact with the floor when the door opens and closes. This effect is worse if floor rises on opening side but is eliminated if a suitable threshold strip is fitted to the floor.

Low level of invasiveness makes it suitable for historic doors but visually can be fairly conspicuous depending upon design of holder.

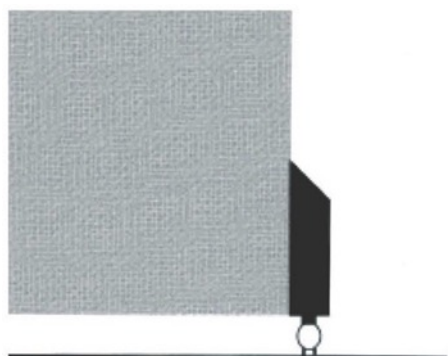
Vulnerable to damage in use but able to tolerate changes in gap dimensions at the time of fitting.



Type T2: Fixed seal with threshold bar

The threshold strip allows carpet to be fitted up to it whilst the part fitted to the door swings clear of the carpet when the door opens.

Low level of invasiveness but fairly conspicuous on historic doors.



Type T3: Self-rising on level threshold

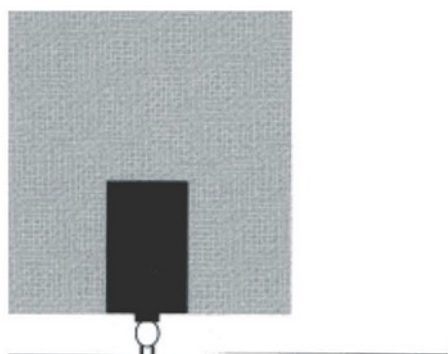
Because seal rises as door opens friction is eliminated over most of the swing.

More visually obtrusive especially in the context of historic doors, because of movement that needs to be accommodated.

Self-levelling on sloping floors.

Generally robust and larger units are available that can often be used to double-up as a kick-plate.

IFSA INFORMATION SHEET 05: GUIDE TO THE SELECTION OF SMOKE SEALS FOR DOOR ASSEMBLIES



Type T4: Self-rising on level threshold

Central location makes it compatible with most leaf edge mounted smoke seals.

Not visually obtrusive but more invasive when considering historic doors.

Less vulnerable to damage.

Less able to accommodate varying gap across width of door at time of fitting but is self-levelling on sloping floors.

10. CONCLUSIONS

It can be seen that there is no universal smoke seal which is perfect for all applications. Seals which are good on the leading edge of the door are sometimes far less suitable at the heel of a door leaf where wiping seals are frequently used in compression. As a consequence, the specifier must consider what aspects are important for the intended use, but the guidance given in this Information Sheet should at least help in making the decision intelligently and in full knowledge of the issues.

11. FURTHER READING

BS476: Section 31.1: 1983. Methods for measuring smoke penetration through door sets and shutter assemblies under ambient conditions

BS EN 1634-1: 2014 + A1: 2018 – Fire resistance and smoke control tests for door, shutter and openable window assemblies and elements of building hardware.

BS9999: 2017 and BS9991: Draft. Fire safety in the design, management and use of buildings. Code of practice.

England and Wales Building Regulations: Approved Document B: 2019 Fire safety

Regulatory Reform (Fire Safety) Order:2005.

IFSA Fact Sheet No. 2: Smoke Seals 0321

IFSA INFORMATION SHEET 05: GUIDE TO THE SELECTION OF SMOKE SEALS FOR DOOR ASSEMBLIES

12. INFORMATION ABOUT IFSA

The Intumescent Fire Seals Association (IFSA) is a trade association established in 1982 with the following objectives:

- To promote the life safety benefit associated with the use of intumescent and smoke seals.
- To promote research and development into extending the areas where these benefits can be utilised.
- To participate in the development of test procedures for fire protection products in BSI, CEN and ISO which are fair, repeatable and reproducible.

IFSA maintains close links with the fire community. The Secretariat is based at International Fire Consultants, from which the association receives technical advice and support.

At the time of its formation, IFSA recognised the need for a simple standard test to compare the performance of intumescent fire seals for use in fire door assemblies, which was free from the influence of other materials and constructional variations and yet subjected the intumescent material to the conditions which prevail in a full scale test.

It, therefore, sponsored the development of such a test and this is now embodied in BS476: Part 23 (1987). Whilst the results of the test have a limited field of application, only being usable on single leaf, single action, latched doors of limited size and distortion characteristics, it does allow the sealing capability of intumescent seals to be compared without any influence from the leaf.

There is now an ISO equivalent test, i.e. ISO 12472:2003. Due to its repeatability the test method is being used successfully to evaluate the influence that real time ageing may have on the properties of intumescent fire seals produced by IFSA member companies. The programme is planned to investigate 25 years exposure to a variety of controlled and uncontrolled environments. Early findings showed no detectable visual decline and tests are being undertaken soon to confirm these findings.

A test programme undertaken in conjunction initially with DOE/BRE to produce standardised conditions for evaluating penetration seals formed the basis of the standard configuration incorporated in the CEN test procedure EN 1366-3 for evaluating seals for use with metal pipes. This configuration has been refined and incorporated in ISO/TR 10295-3: 2012 where a method of extrapolating the results of penetration sealing tests, using simple solid conductors, can be used to establish the field of application of intumescent sealants.

Fire stopping, service penetration sealing, fire doors and fire glass are all critical aspects of fire safe premises and under the new Regulatory Reform (Fire Safety) Order and the ongoing reliance on fire risk assessments, it is vital that risk assessors understand the role and function of these products. IFSA has produced a number of downloadable Good Practice Guides to help risk assessors know and understand when a particular intumescent application is right or wrong, or how a risk may be controlled by the use of the correctly specified sealing product.

The move away from brickwork, blockwork and cast concrete forms of construction, towards a greater use of studwork and joisted walls, floors and ceilings, has left many of our fire separating constructions compromised by the fitting of electrical services (switches, plug sockets, concealed lighting, extract fans). IFSA has cooperated with the Electrical Safety Council (ESC), in the preparation of their guide, 'Electrical installations and their impact on the fire performance of buildings; Part 1, Domestic Premises'.

Intumescent materials can seriously reduce the impact that such installations may produce. Correctly fitted sealing systems make a greater contribution to life safety in a fire than almost any other measure. If you do nothing else to enhance life safety – at least seal up the building with fire and smoke seals, preferably from an IFSA Member because they take fire safety seriously.

IFSA INFORMATION SHEET 05: GUIDE TO THE SELECTION OF SMOKE SEALS FOR DOOR ASSEMBLIES

CURRENT IFSA MEMBERS



DIXON INTERNATIONAL GROUP LTD

www.dig.co.uk

Tel: +44 1223 832851



www.international-pc.com

Tel: +44 1914 012297



www.lkabminerals.com

Tel: +44 1332 545224



www.lorientuk.com

Tel: +44 1626 834252



Intumescent Fire Smoke & Acoustic Seals

www.mannmcgowan.co.uk

Tel: +44 1252 333601



www.millmerran.co.uk

Tel: +44 1626 836373



FIRE CONTAINMENT

www.pyroplex.com

Tel: +44 1905 795432



SEALED TIGHT SOLUTIONS

www.sealedtightsolutions.com

Tel: +44 1661 830101



BIS – Better Installation Systems

www.walraven.com

Tel: +44 1295 753400

**Wolman Wood and
Fire Protection GmbH**

www.fire-protectors.com

Tel: +49 621 40549023

TECHNICAL MEMBER



**INTERNATIONAL FIRE
CONSULTANTS GROUP**

www.ifcgroup.com

Tel: +44 1844 275500

ABOUT IFSA

The Intumescent Fire Seals Association (IFSA) is the trade association dedicated to the science and application of intumescent based sealing materials for the passive fire protection industry.

The Association provides technical advice and guidance on all matters relating to fire door seals, smoke seals, glazing seals and all penetration/gap sealing problems.

T: +44 (0)1844 276928

F: +44 (0)1844 274002

E: contactus@ifsa.org.uk

W: www.ifsa.org.uk