

QUICK VIEW	Application:	Glazed apertures
	Fire Resistance Period:	30 minutes
	Insulation/Integrity:	Insulation and Integrity
	Test Standard:	BS476: Part 20 and 22
	Approval Type:	CERTIFIRE CF346 & CF348

Glazing Systems - 30 Minutes

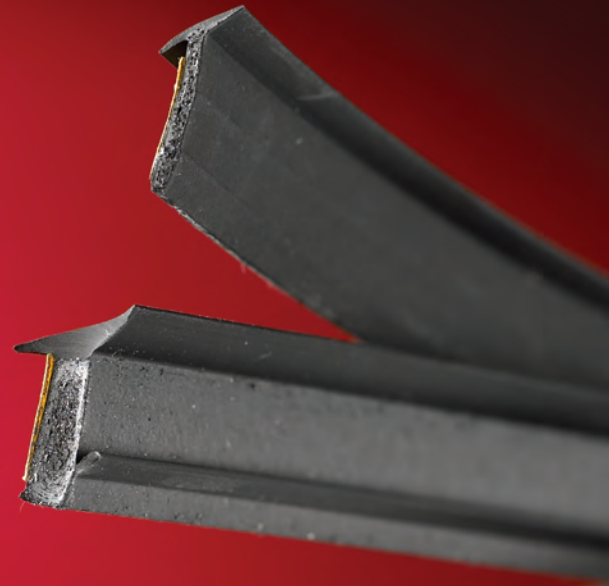
Pyroplex® fire-resisting glazing systems offer a range of solutions for glazing vision panels in fire doors. Pyroplex® fire-resisting glazing systems are available for 30 minute applications.

Pyroplex® 30 minute glazing systems are fully flexible and supplied in slim line reels for easy storage and to minimise wastage. They are also approved for use on slim line economical beads.

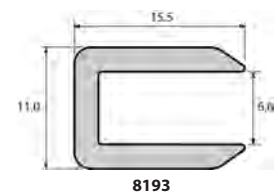
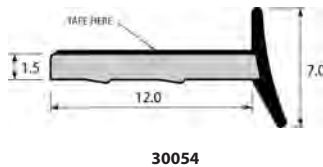
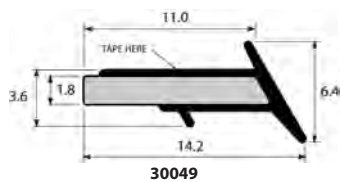
Pyroplex® fire-resisting 30 minute glazing systems are tested to BS476: Part 22: Clauses 7 & 8 and other international standards. They are compliant with the requirements of CERTIFIRE TS25.

CERTIFIRE Certificate No. CF346 & CF348.

Product Data Sheet



Product Profiles



Field of Application

Pyroplex® 30 minute glazing systems have been specifically designed for use in glazed apertures in fire doors in the following applications:

- Glazed apertures in fire resisting timber doors and steel doors.

Product Features

- Supplied on continuous reels for dispensing applications, ease of storage and to reduce wastage in cut-offs.
- Supplied with a high performance self-adhesive backing for ease of application and installation.
- Pyroplex® intumescent material is totally unaffected by water, robust, 'non-flaking' and difficult to tear.

Product Data

Part Number	For Use With Insulating Glass	For Use With Non - Insulating Glass
30049	Yes	Yes
30054	Yes	No
8193	Yes	Yes

Product Testing

Pyroplex® 30 minute glazing systems have been tested to the requirements of CERTIFIRE TS25 and other international standards, including British Standards BS476: Part 22:1987, clause 7 & 8.

Test Reports & International Standards
CERTIFIRE CF346 & CF348
Mid-East Listing Scheme ME0042 & ME0043
Bodycote Warringtonfire 136934, 136935, 137714, 139878, 165278

Installation Instructions

All doors must be lined with a 6mm hardwood liner around the perimeter of the aperture. Failure to line the aperture will invalidate the CERTIFIRE Approval.

1. Unwind the glazing system from the coil. Remove the release liner from the product. Fit the product to the bead.
2. Mitre cut the bead (with glazing system installed) to fit the aperture. Install one complete side of the beading system using M5 x 50 stainless steel screws at 150mm centres.
3. Cut glass to fit aperture with a tolerance of +/-2mm and install. Repeat steps for opposite side of the door.

Health and Safety Information

For detailed information on this product please refer to the relevant Material Safety Data Sheet which is available on request or downloadable at www.pyroplex.com.

Transportation & Storage

Transport Hazards: No regulations apply for the transport of this material. Not classified as hazardous for road, rail, sea or air transport.

Storage: Store in a cool, dry place (not above 35°C) and ensure sufficient ventilation.

Product Guarantee

Providing the product is installed in accordance with the requirements of the guidance document the product is guaranteed for a period of 10 years.

QUICK VIEW	Application:	Glazed apertures
	Fire Resistance Period:	30 minutes
	Insulation/Integrity:	Insulation and Integrity
	Test Standard:	BS476: Part 20 and 22
	Approval Type:	CERTIFIRE CF346 & CF348

Glazing Systems - 30 Minutes

Product Data Sheet

Product Traceability

All Pyroplex® products are identified with a unique reference number for traceability purposes.

Quality Approval

Pyroplex® Limited has a Quality Management System that meets the requirements of BS EN ISO 9001:2000, and is independently verified by BSI Quality Assurance under Certificate Number FM10371.

Copies of this approval are available on request.

Additional Information

The information contained herein is based upon the present state of our knowledge. Recipients of our Pyroplex® products must take responsibility for observing existing laws and regulations.

Technical Support and Guidance

Should you require any further information regarding this product please contact Pyroplex® or visit our website, www.pyroplex.com.

Due to our policy of continuous improvement Pyroplex® Limited reserves the right to amend specifications without prior notice.

QUICK VIEW	Application:	Glazed apertures
	Fire Resistance Period:	30 minutes
	Insulation/Integrity:	Insulation and Integrity
	Test Standard:	BS476: Part 20 and 22
	Approval Type:	CERTIFIRE CF346 & CF348

Glazing Systems - 30 Minutes

Technical Data Sheet

Issue Date:	1st January 2008	Issue No.	1	Revision No.	1
		No. of Pages	1	Page No.	1 of 1

General Description

The Pyroplex® 30 minute glazing systems are an innovative solution for glazing vision panels for use in glazed apertures in fire doors.

Product Features

- Pyroplex® is a low-pressure, multi directional forming intumescent.
- Supplied with a high performance self-adhesive backing for ease of application and installation, where applicable.
- Supplied on continuous reels for dispensing applications.
- Available in a range of colours - 30049 & 30054 only (8193 self coloured black)

Field of Application

- Insulated and non-insulated steel doors and frame.
- New build and retrofit applications.

Product Information

Part No.	Metres per coil	Fire Resistance
30049	100m	30 mins
30054	100m	30 mins
8193	100m	30 mins

Test Evidence

Pyroplex® 30 minute glazing systems have been tested to the requirements of CERTIFIRE TS25 and other international standards, including British Standards BS476: Part 22:1987, clause 7 & 8.

Test Reports & International Standards
CERTIFIRE CF346 & CF348
Mid-East Listing Scheme ME0042 & 43
Bodycote Warringtonfire 136934, 136935, 137714, 139878, 165278

Technical Data - Overview

Chemical composition: The active element is low-pressure forming, multi-directional expandable graphite contained within a high performance durable polymer. Expansion characteristics 10:1

Adhesive performance: Adhesive Type: High performance modified acrylic

Thickness: 205 microns

Temperature resistance: 200°C Short term, 100°C Long term

Tensile strength: >30N/15mm

Humidity resistance: Very Good

Solvent resistance: Very Good

Ageing resistance: Very Good

Life cycle: 10 years, providing the seal is installed in accordance with the requirements given in this guidance notes.

Installation Instructions

All doors must be lined with a 6mm hardwood liner around the perimeter of the aperture. Failure to line the aperture will invalidate the CERTIFIRE Approval.

1. Unwind the glazing system from the coil. Remove the release liner from the product. Fit the product to the bead.
2. Mitre cut the bead (with glazing system installed) to fit the aperture. Install one complete side of the beading system using M5 x 50 stainless steel screws at 150mm centres.
3. Cut glass to fit aperture with a tolerance of +/-2mm and install. Repeat steps for opposite side of the door.

Maintenance and Installation Records

As this product is not subject to routine and replacement programmes, Pyroplex® recommend that all firestopping materials are checked on a regular basis to ensure that the product remains integral. Replace and fit any damaged components to reinstate the fire resistance.

Product Guarantee & Traceability

Providing the product is installed in accordance with the requirements of the guidance document the product is guaranteed for a period of 10 years. All Pyroplex® products are identified with a unique reference number for traceability purposes.

Quality Approval

Pyroplex® Limited has a Quality Management System that meets the requirements of BS EN ISO 9001:2000, and is independently verified by BSI Quality Assurance under Certificate Number FM10371. Copies of this approval are available on request.

Technical Support and Guidance

Should you require any further information regarding this product please contact Pyroplex® or visit our website, www.pyroplex.com.

QUICK VIEW	Application:	Glazed apertures
	Fire Resistance Period:	30 minutes
	Insulation/Integrity:	Insulation and Integrity
	Test Standard:	BS476: Part 20 and 22
	Approval Type:	CERTIFIRE CF346 & CF348

Glazing Systems - 30 Minutes

Material Safety Data Sheet

Issue Date:	1st October 2007	Issue No.	1	Revision No.	1
In accordance with 91/155/EEC directive		No. of Pages	1	Page No.	1 of 1

Field of Application

For use on glazing vision panels in fire rated doorsets.

Composition/Information on Ingredients

Chemical Nature: Thermoplastic element composition containing intercalated graphite in a synthetic compound with the addition of fillers and process oils. Encapsulated in an elastomeric polymer for aesthetic finish. Supplied with an acrylic self-adhesive backing.

Possible Hazards

Principle Hazards: Not subject to decree of hazardous substances.
Critical Hazard to Man and Environment: Not applicable.

First Aid Measures

On Skin Contact: Wash thoroughly with soap and water
On Contact with Eyes: Wash for at least 15 minutes under running water with eyelids held open, consult an eye specialist.
On Ingestion: Rinse mouth immediately, do not induce vomiting, and seek immediate medical attention.
If inhaled: Not applicable in solid state.

Fire Fighting Measures

Pyroplex® intumescent material is self-extinguishing.
Suitable Extinguishing Media: Water, foam, powders and dry extinguishing media.
Special Protective Equipment: Suitable forms of PPE (personal protective equipment.) Avoid inhalation of smoke or fumes.
In the event of fire, contact the appropriate emergency services for assistance.

Accidental Release Measures

Personal Precaution: In the event of fire ensure sufficient ventilation.
Environmental Precaution: Do not discharge the product into drains or water courses, ensure materials are disposed of in accordance with Local Authority regulations and/or Government legislation.
Methods for Cleaning Up: No special measures necessary.

Handling and Storage

Handling: No special requirements. Keep away from food and drink.
Storage: Store in a cool dry place (not above 35°C). Keep out of reach of children. Take care for sufficient ventilation.

Exposure Controls and Personal Protection

Respiratory protection: None normally required, when supplied in solid form.
Hand protection: Appropriate protective gloves.
Eye protection: Appropriate protective goggles.
Skin protection: None normally required.

Physical and Chemical Properties

Form:	Solid
Colour:	All colours
Odour:	Acidic
Density:	1.3 specific gravity

Stability and Reactivity

Conditions to be avoided: Thermal decomposition above 300°C
Hazardous Decomposition Products: Thermal decomposition, fumes contain hydrogen chloride. However, the activated graphite is effective at removing aromatic particles from smoke emissions.

Toxicological Information

Acute Toxicity: Not applicable in solid state.

12. Ecological Information

General Advice: Observe the legal provisions regarding the prevention of ground water and surface water as well as air. Do not discharge product into natural waters without pre-treatment.

Disposal Considerations

Recommendations: Disposal by means in accordance with local regulations e.g. suitable deposition.

Transport Information

Transport Hazards: No regulations apply for the transport of this material. Not classified as hazardous for road, rail, sea or air transport.

Regulatory Information

Labelling according to EEC directives:	
National legislation/ regulations	Not applicable.
VbF Classifications	None
Water hazard class	Not applicable.

Other Information

The information contained herein is based upon the present state of our knowledge. Recipients of our Pyroplex® products must take responsibility for observing existing laws and regulations.

Due to our policy of continuous improvement Pyroplex® Limited reserves the right to amend specifications without prior notice.